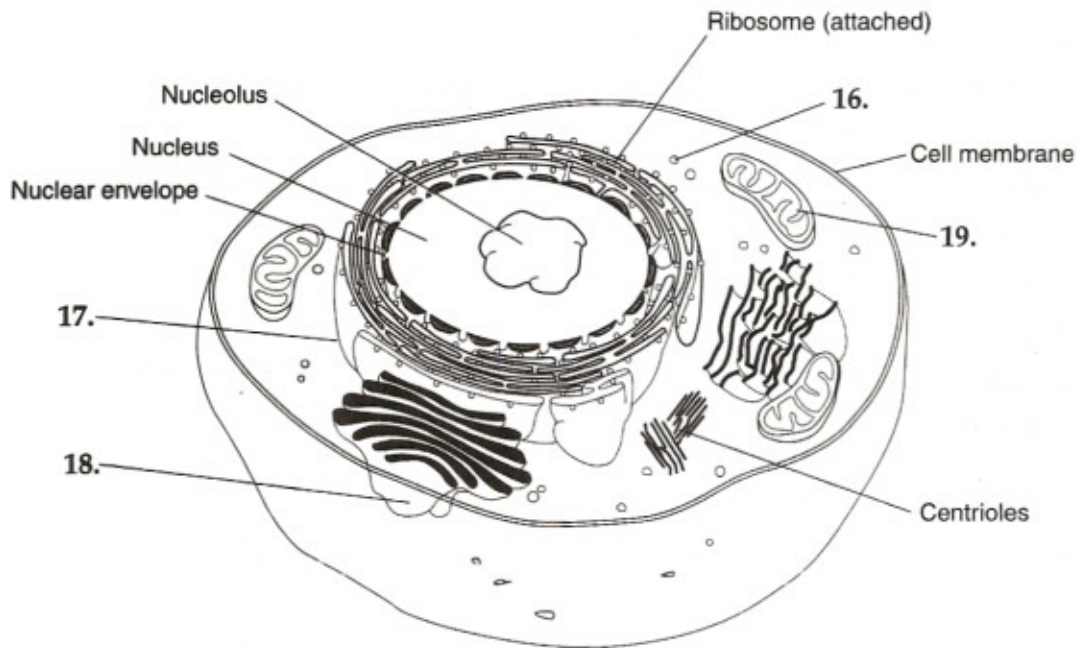


**Labeling Diagrams** On the lines provided, label the structures found in an animal cell that correspond with the numbers in the diagram.



- 16. \_\_\_\_\_
- 17. \_\_\_\_\_
- 18. \_\_\_\_\_
- 19. \_\_\_\_\_

**Completion** On the lines provided, complete the following sentences.

- 20. The distinct, threadlike structures that contain the genetic information of the cell are called \_\_\_\_\_.
- 21. Molecules tend to move from an area of high concentration to an area of low concentration in a process known as \_\_\_\_\_.
- 22. When some substances can pass across them but others cannot, biological membranes are said to have \_\_\_\_\_.
- 23. The process in which water diffuses through a selectively permeable membrane is called \_\_\_\_\_.
- 24. The process by which a protein channel allows molecules to cross the cell membrane is called \_\_\_\_\_.
- 25. The process that requires an input of energy to help material move from an area of lower concentration to an area of greater concentration is called \_\_\_\_\_.